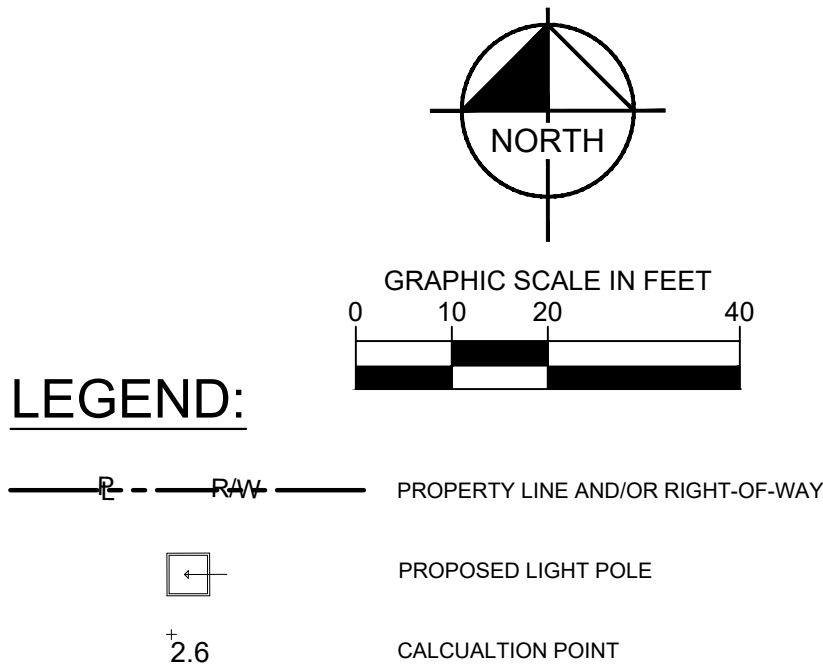


| Luminaire Schedule | | | | | | | | |
|--------------------|-----|-------|-------------|---|-------|------------------|-----------------|-------------|
| Symbol | Qty | Label | Arrangement | Description | LLF | Luminaire Lumens | Luminaire Watts | Total Watts |
| ⊙ | 17 | GK | Single | VerazLED GL9-M8-1L-OT-MCT-34-CCT-EM-OC8 | 0.960 | 3600 | 22 | 374 |
| ⊙ | 3 | GK | Single | VerazLED GL9-M8-1L-OT-MCT-34-CCT-OC8 | 0.960 | 3600 | 22 | 66 |



1. ALL WORK AND MATERIALS SHALL COMPLY WITH ALL CITY/COUNTY/STATE REGULATION AND CODES.
2. CALCULATED VALUES ARE DERIVED THROUGH A COMPUTER BASED MODEL WITH LIGHT FIXTURE DATA AS SUPPLIED BY MANUFACTURER THROUGH IES FILES.
3. ANY DEVIATION FROM SPECIFIED FIXTURE MODELS AND MOUNTING HEIGHTS IN THIS EXHIBIT WILL DISCOUNT THE VALIDITY OF THESE CALCULATIONS.
4. THE PHOTOMETRIC ANALYSIS EXCLUDES ALL PROPOSED OFF-SITE STREET LIGHTING, PROPOSED LANDSCAPE LIGHTING, AND EXISTING OFF-SITE LIGHTING.
5. ALL LUMINAIRE SYMBOLS ARE DIAGRAMMATIC ONLY. CONTRACTOR TO FIELD COORDINATE EXACT LOCATIONS AND SETBACKS AGAINST UNDERGROUND UTILITY AND OTHER OBSTRUCTIONS.
6. CONTRACTOR TO FIELD VERIFY FIXTURE VOLTAGE AND FINISH WITH OWNER AND ARCHITECT PRIOR TO PURCHASE AND INSTALLATION.
7. LIGHT FIXTURES SHALL BE FULLY INTEGRATED WITH INTERIOR LIGHTING SYSTEM. PROVIDE FULLY COMPATIBLE SYSTEM THAT INCLUDES TIMECLOCK OPERATION, INTEGRAL OCCUPANCY SENSING, REMOTE ACCESS AND CONTROL FOR ADJUSTMENT OF HIGH/LOW TRIMMING, ZONING, ETC.
8. CONTRACTOR SHALL ENSURE PROPER EROSION CONTROL IS IN PLACE PRIOR TO DEMOLITION.

[illegible]